

39641/2025/SLAM

USER MANUAL FOR  
PU DASHBOARD -  
PRODUCTION,  
COMMISSIONING  
&  
IC '0' DEFECTS

*CRIS*

# Contents

- 1. Introduction .....3
- 2. Production Dashboard .....3
- 3. Commissioning Dashboard .....5
- 4. IC 'O' Defect Dashboard .....7

## PU DASHBOARD - PRODUCTION, COMMISSIONING & IC 'O' DEFECTS

### 1. Introduction:

Following three Dashboards have been developed on SLAM for Production units:-

- I. **Production Dashboard** for viewing loco Production details at a glance with Graphical representation of Year, Month, Railway, Shed & Loco Type wise Loco Production count.
- II. **IC 'O' Defect Dashboard** for viewing IC'O' defects filled by sheds with date, shed and loco no details along with year/month wise, shed wise, responsibility SMI/Manpower/material wise, equipment wise IC'O' defect count.
- III. **Commissioning Dashboard** for viewing loco Commissioning details at a glance i.e. Year, shed and Loco Status wise count, Loco type wise Commissioning graph along with Average time taken in Loco Commissioning.

The above have been described in detail in subsequent sections.

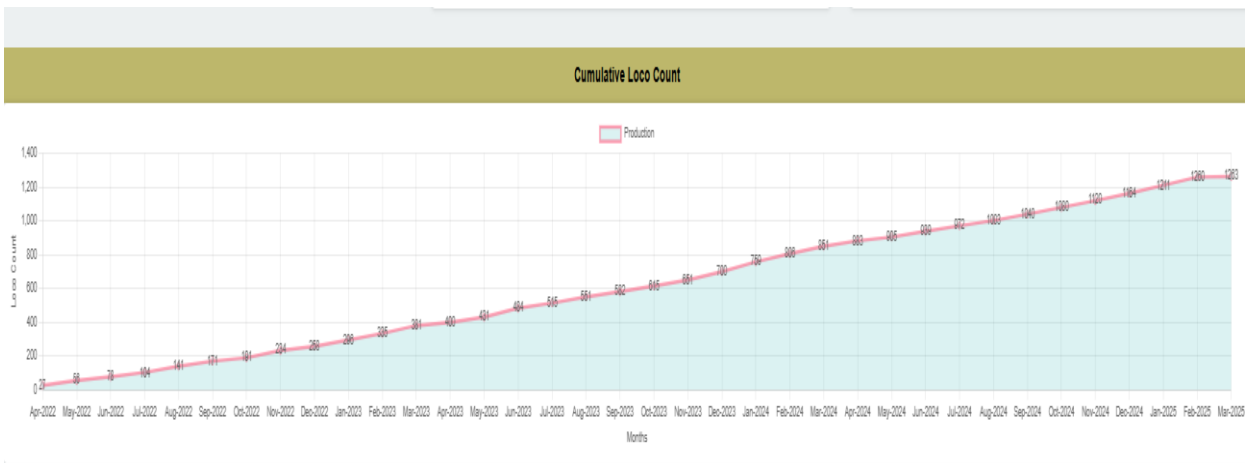
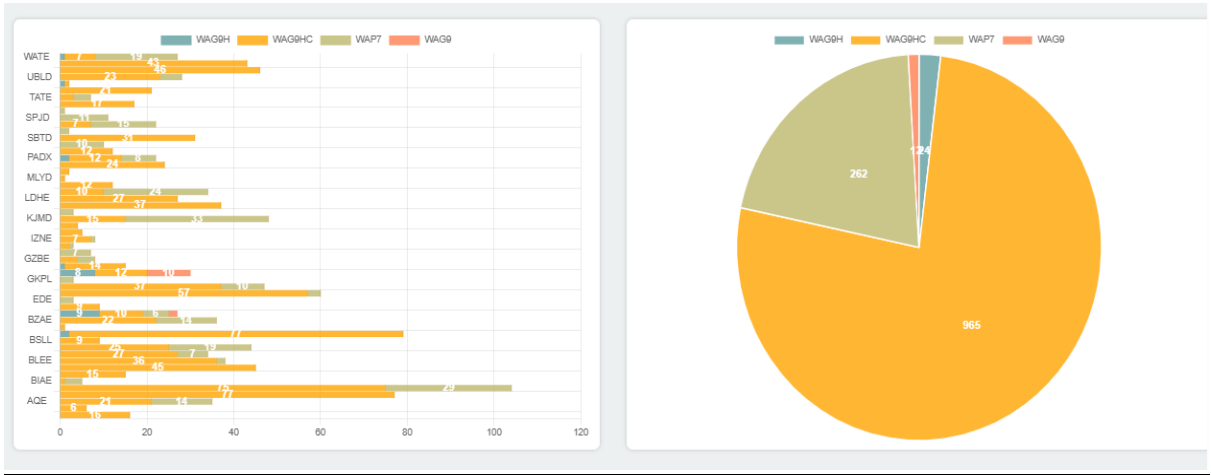
### 2. Production Dashboard

Loco Production will be visible to concerned PU on dashboard.



Following details can be viewed at a glance:-

- Month, Shed, Loco Type wise Graphical representation of Loco Production count



➤ Year, Railway wise Loco Production count:

FINANCIAL YEAR	PRODUCTION
2024-2025	409
2023-2024	470
2022-2023	381
<b>GRAND TOTAL</b>	<b>1260</b>

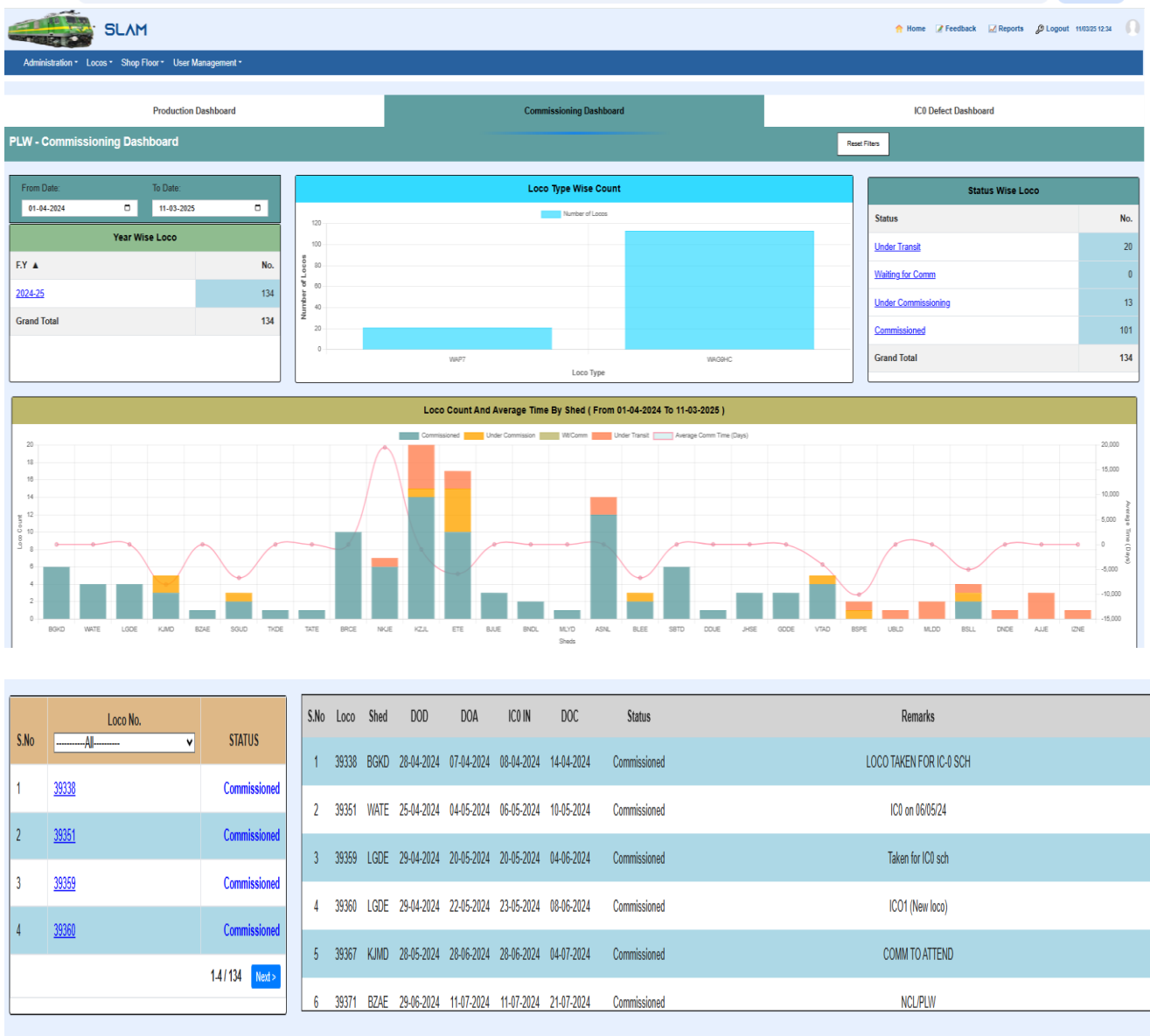
  

RAILWAYS	PRODUCTION
NWR	104
SCR	124
SECR	84
SER	99
SR	29
SWR	76
WCR	86
WR	159
<b>GRAND TOTAL</b>	<b>1260</b>

### 3. Commissioning Dashboard

The process of managing Loco Commissioning in SLAM is conducted as under:

- i. **PU:** manufacture and dispatches locos.
- ii. **Railway Board:** allots loco to Electric Loco Shed
- iii. **Electric Loco Shed:** takes the loco under IC'0' schedule inspection
- iv. **Production Unit:** Loco status will be visible to concerned PU on dashboard on SLAM.



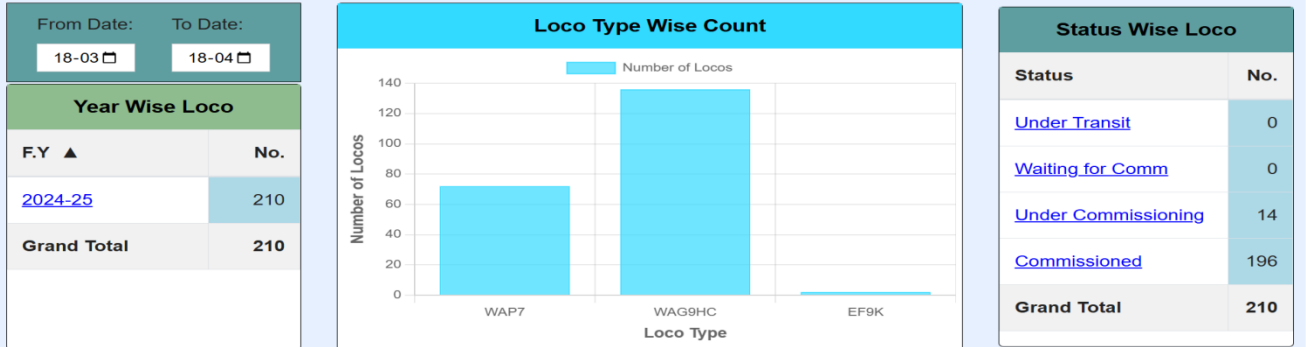
PU's can view following attributes pertaining to locomotive manufactured by them:

- Loco Status wise count viz.
  - **Under Transit** (Period in between nomination of loco to shed by Railway Board till inward of loco by shed)
  - **Waiting for Commissioning** (Period in between inward of loco till taking loco under IC'0' schedule by shed)

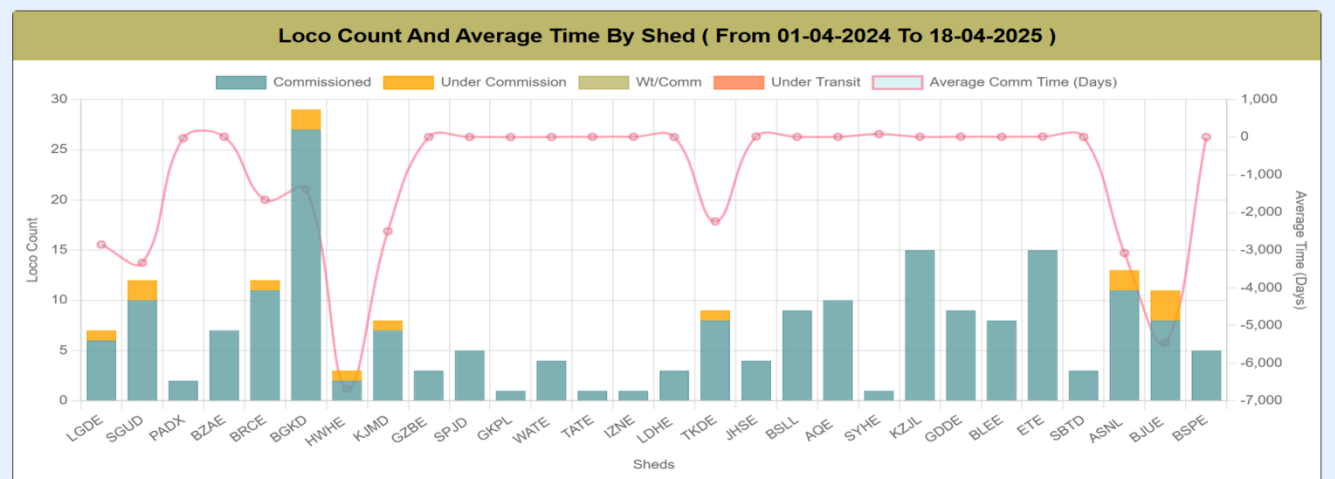
- **Under Commissioning** (Period in between taking loco under IC0 schedule till outward by shed)
- **Commissioned** (After loco is outward by shed)

- Year wise Loco Commissioning Count
- Loco type wise Commissioning graph

**BLW - Commissioning Dashboard**



- **Average time taken in loco Commissioning**
- **Shed wise Count of Loco Commissioning**



- **Loco wise status and details**

S.No	Loco No.	STATUS
1	<a href="#">37705</a>	Commissioned
2	<a href="#">37706</a>	Commissioned
3	<a href="#">37709</a>	Commissioned
4	<a href="#">37710</a>	Commissioned

1-4 / 210 [Next >](#)

S.No	Loco	Shed	DOD	DOA	IC0 IN	DOC	Status	Remarks
42	37752	WATE	25-09-2024	08-10-2024	08-10-2024	12-10-2024	Commissioned	IC0 on 08/10/24
43	37753	WATE	25-09-2024	08-10-2024	08-10-2024	13-10-2024	Commissioned	IC0 on 08/10/24
44	37754	BGKD	08-10-2024	01-01-1900	17-10-2024	23-10-2024	Commissioned	LOCO TAKEN UNDER IC0 SCHEDULE
45	37755	SGUD	14-10-2024	27-10-2024	28-10-2024	06-11-2024	Commissioned	For IC0 schedule
46	37756	SGUD	16-10-2024	15-11-2024	16-11-2024	25-11-2024	Commissioned	For IC0 schedule.

**4. IC '0' Defect Dashboard**

The process of managing Loco IC '0' defects in SLAM is conducted as under:

- I. **Electric Loco Shed:** has the authority to fill, update and view IC'0' defects when "New locomotive" is commissioned and shed out (IC0 defect form).
- II. **Production Unit:** Loco details will be visible to concerned PU on dashboard on SLAM after loco is outward from shed. PU can view IC'0' defects filled by sheds with date, shed and loco no details along with year/month wise, shed wise, responsibility SMI/Workmanship/material wise, equipment wise IC'0' defect count.

Detailed review of ICO defects can be done at a glance:-

- **Total ICO count-** Month /Year /Loco / Shed/ Loco Type / Loco Number wise
- **Responsibility -** SMI/Workmanship/Material wise
- **Main Assembly wise defect / Equipment / Failure Category wise**
- Graphical representation for **Failure Type Wise Defect**

Sno.	ICO Date	Loco No	Shed Name	Failure Description	Main Assembly	Equipment Code	Failure Category	Failure Type	Remarks
1	31 Jan 2025	39408	TKDE	air dryer	Cab-1_Roof	Air Dryer	Air leakage	Workmanship	
2	31 Jan 2025	39408	TKDE	Carbon strip	Cab-2_Roof	25KV HIGH VOLTAGE BUSHING	Cable accessories deficient	Workmanship	
3	31 Jan 2025	39408	TKDE	panto	Main_Roof	PANTOGRAPH	Connection separator broken	Material	
4	31 Jan 2025	39408	TKDE	tm	Cab-2	Traction motor GHH	Improper Cable dressing	MS	
5	31 Jan 2025	39408	TKDE	axle box	Bogie	AXLE BOX 3PH	Item defective	SMI	
6	30 Jan 2025	39404	LDHE	CBC operating handle modification not done	Bogie	CBC COUPLER 3PH	Modification required/not done	Workmanship	Test case
7	30 Jan 2025	39404	LDHE	RTIS not working	Cab-1_Roof	AUTO DRAIN VALVE	Air leakage	Workmanship	Test case
8	30 Jan 2025	39404	LDHE	Air leakage from Hose pipe	Cab-1_Roof	Air Dryer	Air leakage	Material	Test case